



Law DRYERS

LAW Grain Dryers

- LAW grain dryers are available in sizes up to 500 tons per hour
- Ultra-low greenhouse gas emissions
- Safe and low operating cost
- High efficiency design
- Air recycling
- Totally enclosed design
- Low noise level
- Mixed-flow column
- Meets OSHA & confined space requirements

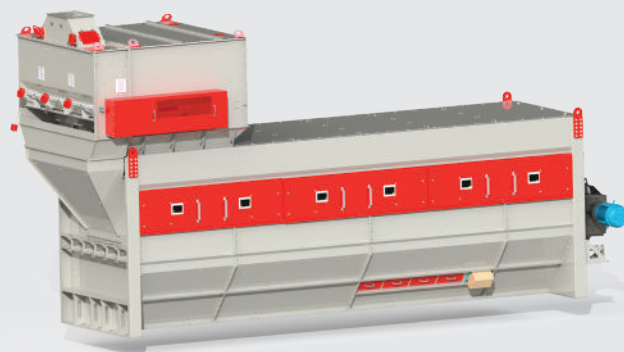
Marot CLEANERS

MAROT Rotary Cleaners

- Vibration free
- Low maintenance
- Heavy-duty construction
- Variable pitch and speed
- Up to 500 t/h

Flat Screeners

- Lowest dynamic load in the industry
- Suspended carbon fiber rod design
- Low maintenance & operating cost
- Dual aspiration available
- Capacity up to 400 t/h
- Circular screening movement



Milpro PROCESS EQUIPMENT

Counterflow Cooler



Crumbler



Aspirator



Roller mill



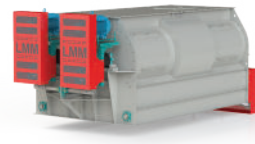
Feed dresser



Single shaft mixer



Cyclone



Double shaft mixer

OTHER EQUIPMENT

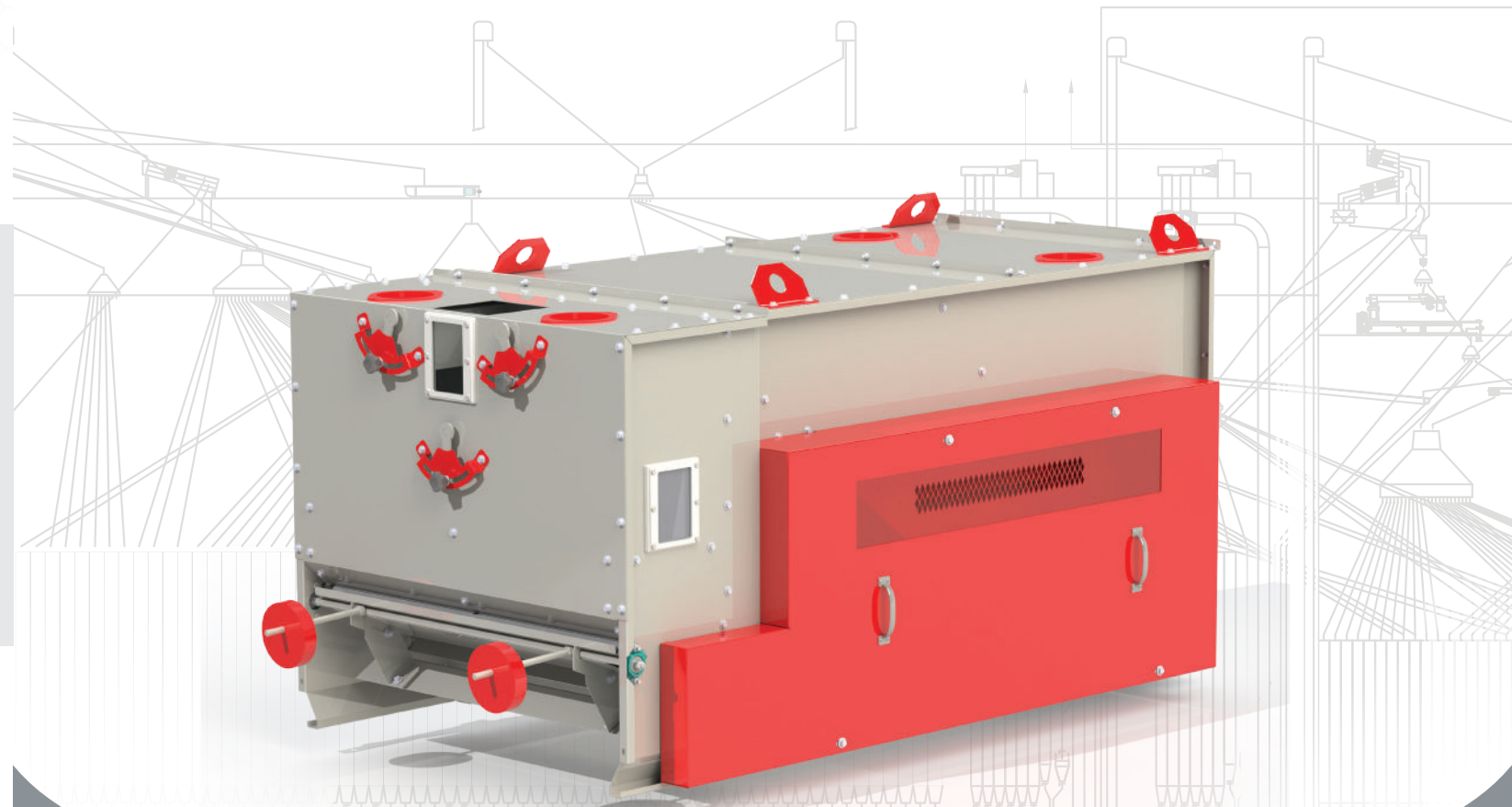
- Distributors
- Bucket elevators
- Flat bottom drag conveyors
- Round bottom drag conveyors
- High Flight Flat bottom drag conveyors
- Screw conveyors
- Belt conveyors
- Vertical Hammer Mills
- Vertical mixers
- Mobile probe supports
- Hoppers
- Scale Hoppers



Immequip.com



ASPIRATOR





ASPIRATOR



Our **MAROT ASPIRATORS** are designed to effectively separate in a single pass light trash from good cereals and grain. For this sole operation, an “AD” aspirator model, from which trash is sent directly to the dust collecting system, is recommended. The “AS” aspirator model includes a decanting chamber that removes most of the heavier light trash within the unit. This reduces significantly maintenance and wear on the air system and the load of reject going to the dust collection system. Both types can be used as stand-alone units or combined to a rotary cleaner. This simple system using a minimum of moving parts can be easily calibrated for various products.

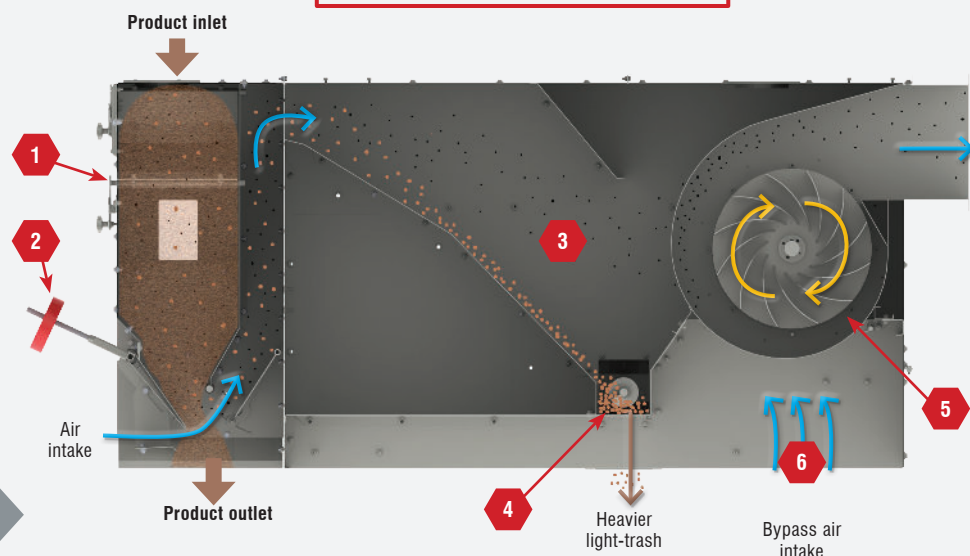
OVERVIEW

SPECIFICATIONS

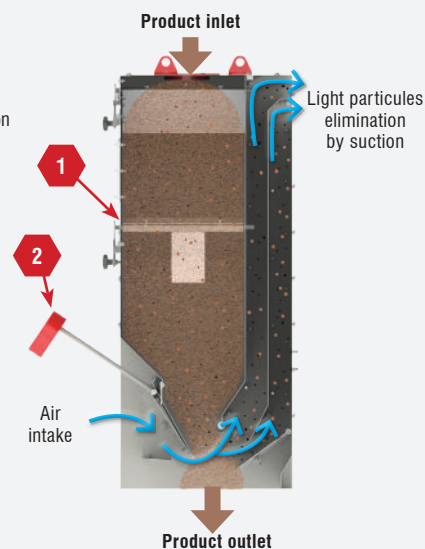
MODEL	Air demand (CFM)	Capacity* (BPH)	Fan location	Dimensions (in.)	Weight (lbs)
AS-350	3600	1600	Built-in or remote	52 x 82 x 35 h.	900
AS-510	4600	2000	Built-in or remote	60 x 103 x 43 h.	1100
AS-2010	7000	8000	Remote	92 x 110 x 60 h.	1600
AS-3504	12000	10000	Remote	115 x 115 x 68 h.	2100
AS-3750	15000	12000	Remote	124 x 115 x 77 h.	2600
AD-350	3600	1600	Remote	22 x 38 x 33 h.	200
AD-510	4600	2000	Remote	29 x 49 x 43 h.	300
AD-600	1600	1200	Remote	19 x 40 x 51 h.	200
AD-1000	3600	2800	Remote	24 x 50 x 53 h.	325
AD-2010	7000	8000	Remote	36 x 66 x 55 h.	600
AD-3504	12000	12000	Remote	36 x 85 x 61 h.	825
AD-3750	15000	16500	Remote	36 x 109 x 69 h.	1025

* Capacity in bushels per hour (BPH) based on wheat at 60 lbs/Bu, 16% humidity, 2% impurities. Higher % impurities decreases equipment capacity.

AS TYPE ASPIRATOR



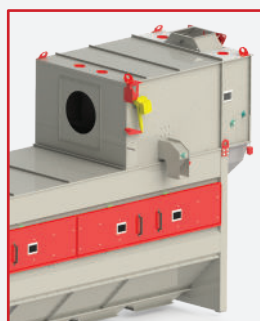
AD TYPE ASPIRATOR



- 1 Inlet Surge hopper necessary to distribute products across the aspirator width. The surge hopper is available with anti-abrasive liners.
- 2 Adjustable counterweight system used to create a uniform thin product stream before aspiration.
- 3 Decanting chamber separating heavier light trash material from airstream going to the final dust collection system.
- 4 Heavier-Light trash screw collector concentrating rejects in a single outlet.
- 5 Optional built-in fan available on some units that creates a compact unit. The fan can also be positioned away from the aspirator.
- 6 Adjustable air intake bypass used to calibrate the system so only the foreign material wanted is lifted out.

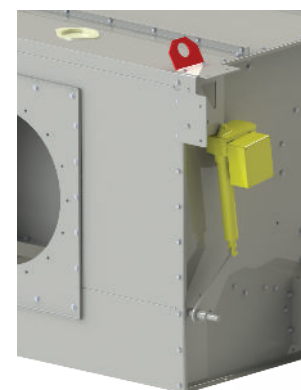
Features:

- High capacity & product uniformity
- Capacity up to 16 500 BPH*
- Low maintenance and ease of calibration
- Heavy-duty construction
- Seamless integration with the **Marot rotary cleaners**



* BPH means Bushels Per Hour

Electrical control on bypass air flow allowing automatic adjustments of airflow through grain when various products are cleaned with the aspirator.



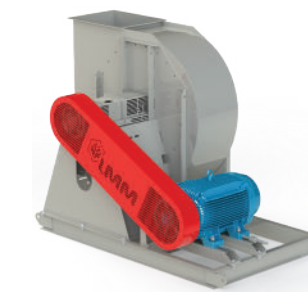
Other options:

- Stainless steel construction
- Anti-abrasive liners available in AR400
- steel/UHMW/RHINO HYDE
- Related equipments: Cyclones, airlocks, fans, transitions, ducting and conveyors

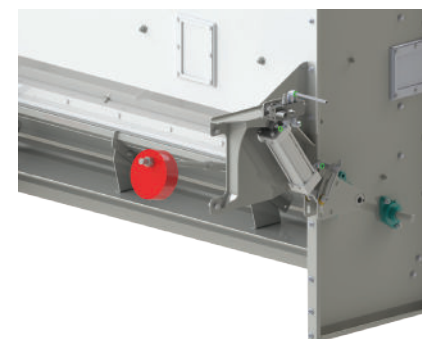
Milpro cyclones



Fans



Counterweight flap absorber to provide a consistent product stream when incoming flow rate fluctuates. It can also allow a periodic clean out of large foreign material build-up on the counterweight system.



OPTIONS