



# BUCKET ELEVATOR



**LMM**  
LAW-MAROT-MILPRO



# BUCKET ELEVATOR



MILPRO material handling equipment sets the industry standard for grain, milling, and other bulk product handling applications. We take pride in providing a comprehensive pre-sale assessment. With our extensive experience, we deliver robust and reliable solutions that maximize project benefits.

DESCRIPTION

FEATURES

- Heavy duty construction provides increased service life
- Minimum cross-contamination and product breakage
- Pulley diameters available from 14 to 48 inches
- Capacities from 350 to 60,000 cubic feet per hour
- Steel gauges are selected according to their application. Painted steel, galvanized steel, stainless steel, or other types of specialty steel are available upon request.
- Self-cleaning boot with mechanical or hydraulic tension adjustment
- Design that can meet current explosion standards (NFPA 68, NFPA 69)
- Ladders with safety cages, rest levels, and head service platform
- Designed to facilitate on-site assembly
- Dust and weatherproof
- Buckets available in polyethylene, urethane, steel, stainless steel, and vented based on the application
- Wing, spiral wing, and custom boot pulleys for specialized needs
- Standard vulcanized options, also available with slide lagging
- Shaft mounted direct drive with optional direct-coupled gearbox or pulley-belt coupling
- Liner materials available: AR, Hardox, Urethane, UHMW, Ceramic Tile
- Optional hazard monitoring available to comply with NFPA



# BUCKET ELEVATOR

MODEL*	PULLEY (in)	VOLUMETRIC CAPACITY (BPH)	VOLUMETRIC CAPACITY (CFH)	GRAVIMETRIC CAPACITY (MTPH)	PULLEY SPEED (RPM)	BELT SPEED (FPM)	TRUNK (in)	BUCKET (in)	BUCKET SPACING (in)
ECF14-0604-08	14	500	625	13	70	257	9 X 10	6 x 4	8
ECF14-0705-07	14	1,000	1,245	25	70	257	9 X 10	7 x 5	7
ECF14-0905-06	14	1,500	1,870	38	70	257	10 x 12	9 x 5	6
ECF14-0905-05	14	2,000	2,490	51	70	257	10 x 12	9 x 5 LP	5
ECF24-0906-10	24	2,000	2,490	51	58	364	10 x 12	9 x 6	10
ECF24-0906-08	24	2,500	3,110	64	58	364	10 x 12	9 x 6	8
ECF24-0906-06	24	3,000	3,735	76	58	364	10 x 12	9 x 6	6
ECF30-1106-09	30	3,000	3,735	76	52	408	12 x 14	11 x 6	9
ECF24-0906-05	24	3,500	4,360	89	58	364	10 x 12	9 x 6 LP	5
ECF30-1107-11	30	3,500	4,360	89	52	408	12 x 14	11 x 7	11
ECF24-0906-05	24	4,000	4,980	102	58	364	10 x 12	9 x 6 LP	5
ECF30-1107-09	30	4,000	4,980	102	52	408	12 x 14	11 x 7	9
ECF24-1107-07	24	5,000	6,225	127	58	364	12 x 14	11 x 7 LP	7
ECF30-1107-07	30	5,000	6,225	127	52	408	12 x 14	11 x 7 LP	7
ECF24-1207-6	24	6,000	7,470	153	58	364	12 x 16	11 x 7 LP	6
ECF30-1407-8	30	6,000	7,470	153	52	408	14 x 19-1/2	14 x 7	8
ECF30-1207-6	30	7,000	8,715	178	52	408	12 x 16	12 x 7 LP	6
ECF36-1408-10	36	7,000	8,715	178	49	462	14 x 19-1/2	14 x 8	10
ECF30-1407-6	30	8,000	9,955	204	52	408	14 x 19-1/2	14 x 7 LP	6
ECF36-1408-9	36	8,000	9,955	204	49	462	14 x 19-1/2	14 x 8	9
ECF36-1408-8	36	9,000	11,200	229	49	462	14 x 19-1/2	14 x 8 LP	8
ECF36-1608-8	36	10,000	12,445	255	49	462	14x 21	16 x 8 LP	8
ECF42-1608-9	42	10,000	12,445	255	45	495	16 x 21	16 x 8	9
ECF36-1608-7	36	12,000	14,935	305	49	462	14x 21	16 x 8 LP	7
ECF48-1808-9	48	12,000	14,935	305	41	515	16 x 24	18 x 8	9
ECF48-1808-7	48	15,000	18,670	382	41	515	16 x 24	18 x 8 LP	7
ECF48-D1608-9	48	20,000	24,890	509	41	515	16 x 38	16 x 8 (2X)	9
ECF48-D1808-8	48	25,000	31,115	636	42	515	16 x 42	18 x 8 (2X)	9

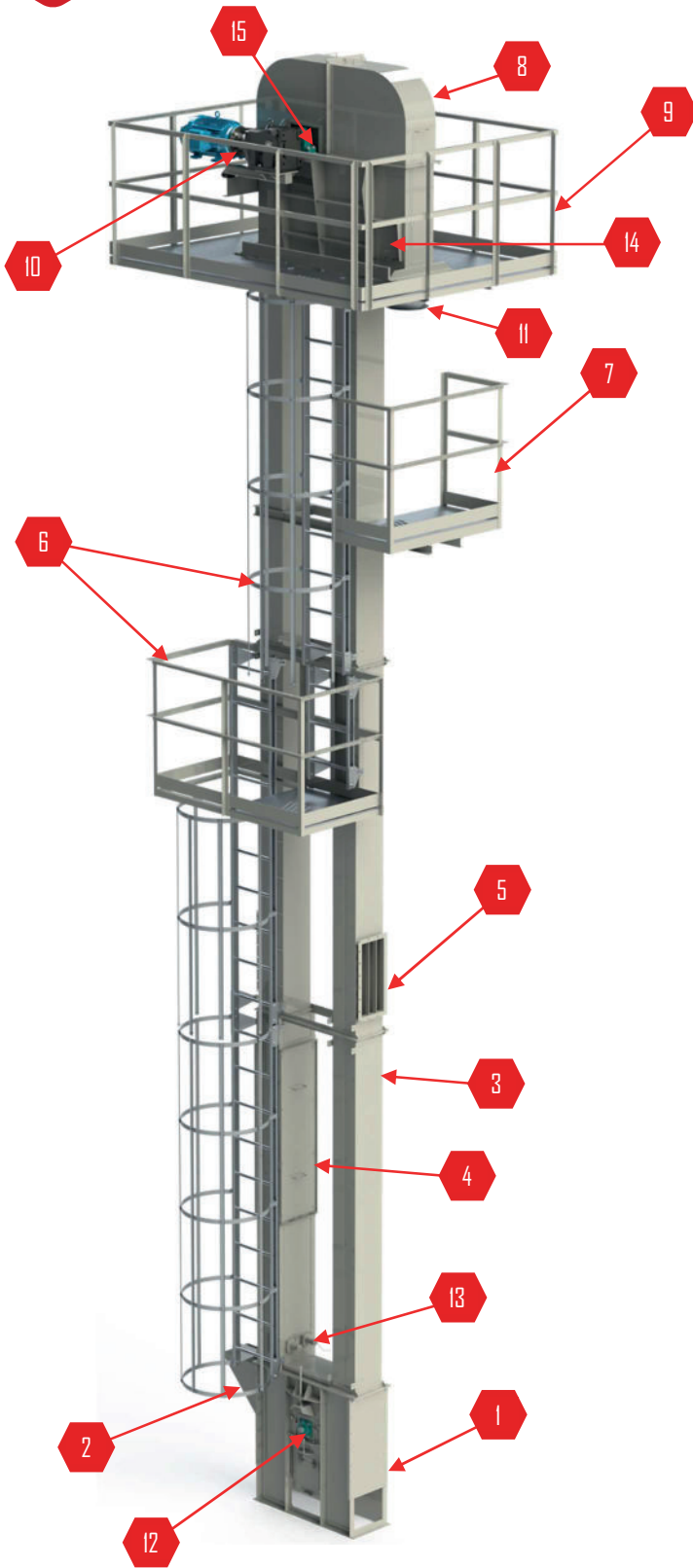
\*Capacity for dry and granular products at 56 lbs/bu or 45 lbs/cu.ft. These values are guidelines only. Real capacities may vary.

\*Other models and configurations available.



# BUCKET ELEVATOR

AVAILABLE FEATURES



- 1 **Elevator Boot** featuring a belt tensioner and wing pulley. Available with self-cleaning boot design option.
- 2 **Boot inlet hopper** available with anti-abrasive linings.
- 3 **Twin trunk** also available with a single trunk design.
- 4 **Inspection doors** on trunking provide access for maintenance and inspection of buckets and the belt.
- 5 **Explosion vents** available per NFPA standard. vent types available: hinged door, membrane and flame dissipator.
- 6 **Ladders equipped with guardrails** and **resting platforms** complying with OSHA standards.
- 7 **Service platform** beneath the discharge of the elevator's head for maintenance access.
- 8 **Elevator head** featuring a vulcanized crown face pulley, optionally equipped with anti-abrasive linings.
- 9 **Head service platform** for maintenance.
- 10 **Motor gearbox** assembly consisting of a gearbox, support, motor, with an optional backstop.
- 11 Elevator **discharge transition** customizable as required.
- 12 **Boot pulley rotation detector** available
- 13 **Belt alignment sensors** available.
- 14 **Chute blockage detector** at elevator discharge available.
- 15 **High-temperature bearing detectors** available to prevent overheating and mitigate fire hazards.

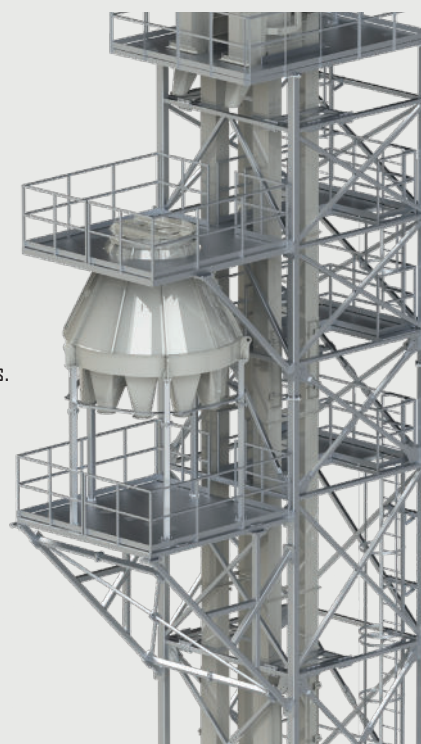


**Handling jib** – designed to facilitate maintenance and part replacement on the elevator head.

Stainless steel **single trunking** design – ideal for handling fertilizer products.



**Tower** – custom designed to support the bucket elevator and provide convenient access to required elevations.



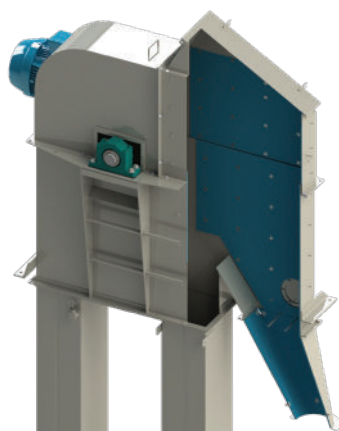
**Lift platforms and supports** tailored to meet specific customer requirements.



**Elevator Boot**

**OPTIONS:**

- Self-cleaning
- Inlet hopper magnet
- Inlet hopper on upside, downside, or both



**Anti-abrasive linings** installed in the elevator boot, head, and transitions when conveying abrasive products.



**Law DRYERS**

**LAW Grain Dryers**

- LAW grain dryers are available in sizes up to 500 tons per hour
- Ultra-low greenhouse gas emissions
- Safe and low operating cost
- High efficiency design
- Air recycling
- Totally enclosed design
- Low noise level
- Mixed-flow column
- Meets OSHA & confined space requirements



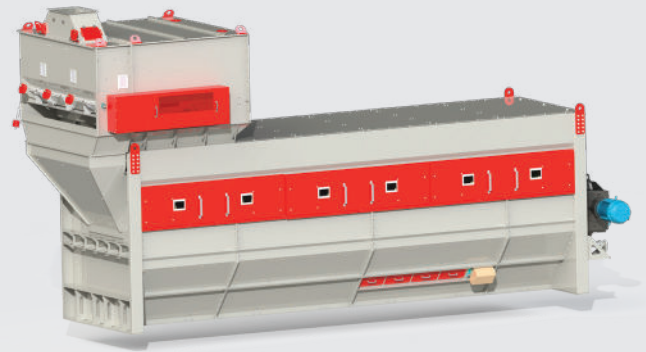
**Marot CLEANERS**

**MAROT Rotary Cleaners**

- Vibration free
- Low maintenance
- Heavy-duty construction
- Variable pitch and speed
- Up to 500 t/h

**Flat Screeners**

- Lowest dynamic load in the industry
- Suspended carbon fiber rod design
- Low maintenance & operating cost
- Dual aspiration available
- Capacity up to 400 t/h
- Circular screening movement



**Milpro PROCESS EQUIPMENT**

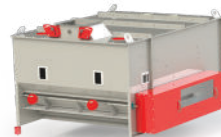
Counterflow Cooler



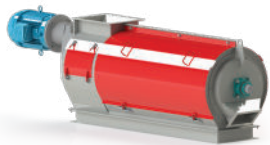
Crumbler



Aspirator



Roller mill



Feed dresser



Single shaft mixer



Cyclone



Double shaft mixer

**OTHER EQUIPMENT**

- Distributors
- Bucket elevators
- Flat bottom drag conveyors
- Round bottom drag conveyors
- High Flight Flat bottom drag conveyors
- Screw conveyors
- Belt conveyors
- Vertical Hammer Mills
- Vertical mixers
- Mobile probe supports
- Hoppers
- Scale Hoppers



**Immequip.com**